



MASTER LEDtube EM/Mains T8

MAS LEDtube STD 1200mm 10.5W865 T8 I

The Philips MASTER LEDtube integrates a LED light source into a traditional fluorescent form factor. Its unique design creates a perfectly uniform visual appearance which cannot be distinguished from traditional fluorescent. For those that are looking for value for money within limited budget and re-lamping efforts for better light effect and lifetime.

Product data

General Information	
Cap-Base	G13 [Medium Bi-Pin Fluorescent]
Nominal Lifetime (Nom)	50000 h
Switching Cycle	200000X
B50L70	50000 h

Light Technical	
Color Code	865 [CCT of 6500K]
Luminous Flux (Nom)	1600 lm
Luminous Flux (Rated) (Nom)	1600 lm
Correlated Color Temperature (Nom)	6500 K
Color Consistency	<6
Color Rendering Index (Nom)	83
LLMF At End Of Nominal Lifetime (Nom)	70 %

Operating and Electrical	
Input Frequency	50 to 60 Hz
Power (Rated) (Nom)	10.5 W
Lamp Current (Max)	50 mA
Lamp Current (Min)	45 mA

Starting Time (Nom)	0.5 s
Warm Up Time to 60% Light (Nom)	0.5 s
Power Factor (Nom)	0.9
Voltage (Nom)	220-240 V

Temperature	
T-Ambient (Max)	45 °C
T-Ambient (Min)	-20 °C
T-Storage (Max)	65 °C
T-Storage (Min)	-40 °C
T-Case Maximum (Nom)	50 °C

Controls and Dimming	
Dimmable	No

Mechanical and Housing	
Product Length	1200 mm

Approval and Application	
Energy Saving Product	Yes

MASTER LEDtube EM/Mains T8

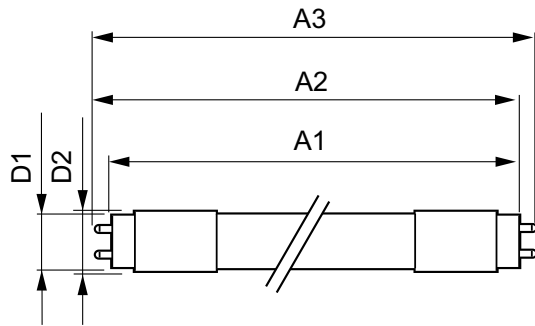
Energy Efficiency Label (EEL)	A++
Approval Marks	CE marking RoHS compliance KEMA Keur certificate
Energy Consumption kWh/1000 h	11 kWh
Product Data	
Full product code	871869668770300
Order product name	MAS LEDtube STD 1200mm 10.5W865 T8 I
EAN/UPC - Product	8718696687703

Order code	929001297708
Numerator - Quantity Per Pack	1
Numerator - Packs per outer box	10
Material Nr. (12NC)	929001297708
Net Weight (Piece)	0.251 kg

Warnings and Safety

- NOTES: The overall energy efficiency and light distribution of any installation that uses these lamps are determined by the design of the installation.

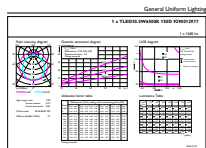
Dimensional drawing



TLED 220-240V 10.5W-36W 6500K G13 ND

Product	D1	D2	A1	A2	A3
MAS LEDtube STD 1200mm 10.5W865 T8 I	25.8 mm	28 mm	1198.2 mm	1205.3 mm	1212.4 mm

Photometric data



MASTER LEDtube EM/Mains T8

