

Specification

Nominal Voltage	12V	
Nominal Capacity(20HR)	15.0AH	
Dimension	Length	181.5±1mm (7.14 inches)
	Width	77±1mm (3.03 inches)
	Container Height	167.5±1mm (6.59 inches)
	Total Height (with Terminal)	167.5±1mm (6.59 inches)
Approx Weight	Approx 4.9 kg (10.8lbs)	
Terminal	T3	
Container Material	ABS	
Rated Capacity	15.00 AH/0.750A	(20hr , 1.80V/cell, 25°C/77°F)
	13.95 AH/1.395A	(10hr, 1.80V/cell, 25°C/77°F)
	12.75 AH/2.55A	(5hr, 1.75V/cell, 25°C/77°F)
	11.47 AH/3.83A	(3hr, 1.75V/cell, 25°C/77°F)
	9.42 AH/9.42A	(1hr, 1.60V/cell, 25°C/77°F)
Max. Discharge Current	225A (5s)	
Internal Resistance	Approx 18mΩ	
Operating Temp. Range	Discharge	-15~50°C (5~122°F)
	Charge	0~40°C (32~104°F)
	Storage	-15~40°C (5~104°F)
Nominal Operating Temp. Range	25±3°C (77±5°F)	
Cycle Use	Initial Charging Current less than 4.5A. Voltage	
	14.4V~15.0V at 25°C(77°F)Temp. Coefficient -30mV/°C	
Standby Use	No limit on Initial Charging Current Voltage	
	13.5V~13.8V at 25°C(77°F)Temp. Coefficient -20mV/°C	
Capacity affected by Temperature	40°C (104°F)	103%
	25°C (77°F)	100%
	0°C (32°F)	86%
Self Discharge	Leoch DJW series batteries may be stored for up to 6 months at 25°C(77°F) and then a freshening charge is required. For higher temperatures the time interval will be shorter.	



Applications

- ◆ All purpose
- ◆ Uninterruptable Power Supply (UPS)
- ◆ Electric Power System (EPS)
- ◆ Emergency backup power supply
- ◆ Emergency light
- ◆ Railway signal
- ◆ Aircraft signal
- ◆ Alarm and security system
- ◆ Electronic apparatus and equipment
- ◆ Communication power supply
- ◆ DC power supply
- ◆ Auto control system



Constant Current Discharge (Amperes) at 25 °C (77°F)

F.V/Time	5min	10min	15min	20min	30min	45min	1h	2h	3h	4h	5h	6h	8h	10h	20h
1.85V/cell	28.6	21.9	18.2	15.7	12.1	8.95	7.54	4.46	3.49	2.84	2.31	2.01	1.62	1.35	0.74
1.80V/cell	38.3	28.0	22.0	18.6	14.3	10.4	8.45	4.87	3.76	3.03	2.48	2.15	1.72	1.40	0.75
1.75V/cell	43.2	30.8	24.0	20.0	14.9	10.8	8.84	5.05	3.83	3.10	2.55	2.21	1.75	1.43	0.76
1.70V/cell	47.6	33.6	25.6	21.0	15.5	11.2	9.12	5.18	3.93	3.18	2.61	2.26	1.77	1.46	0.77
1.65V/cell	52.5	36.2	27.2	22.3	16.3	11.5	9.33	5.25	4.10	3.29	2.69	2.31	1.80	1.49	0.78
1.60V/cell	57.9	39.3	29.1	23.8	17.3	12.0	9.42	5.48	4.22	3.39	2.78	2.36	1.82	1.51	0.79

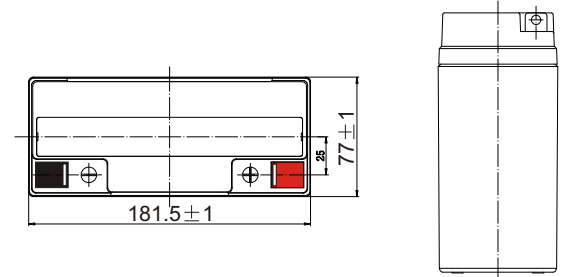
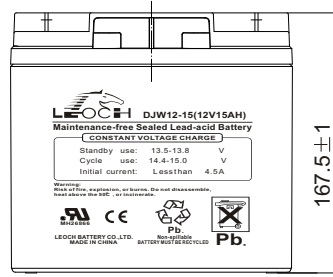
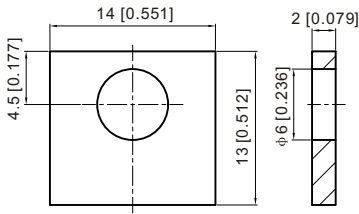
Constant Power Discharge (Watts) at 25 °C (77°F)

F.V/Time	5min	10min	15min	20min	30min	45min	1h	2h	3h	4h	5h	6h	8h	10h	20h
1.85V/cell	52.2	40.5	33.9	29.6	23.2	17.2	14.6	8.66	6.80	5.55	4.54	3.95	3.20	2.68	1.47
1.80V/cell	69.4	51.2	40.4	34.5	26.9	19.9	16.2	9.39	7.28	5.89	4.85	4.22	3.38	2.76	1.48
1.75V/cell	76.5	55.3	43.6	36.8	27.7	20.4	16.9	9.70	7.38	6.00	4.96	4.32	3.43	2.83	1.50
1.70V/cell	81.9	58.9	45.9	38.3	28.7	21.1	17.4	9.92	7.58	6.15	5.08	4.40	3.48	2.88	1.52
1.65V/cell	89.1	63.0	48.4	40.4	30.0	21.5	17.6	10.0	7.87	6.34	5.20	4.49	3.52	2.94	1.54
1.60V/cell	96.0	66.9	50.9	42.6	31.4	22.3	17.7	10.4	8.07	6.52	5.35	4.57	3.55	2.96	1.55

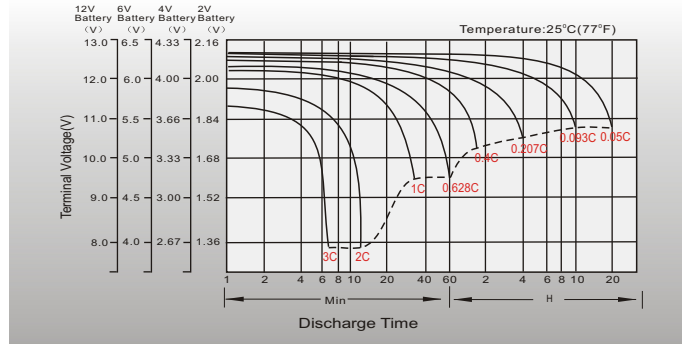
Dimensions

T3 Terminal

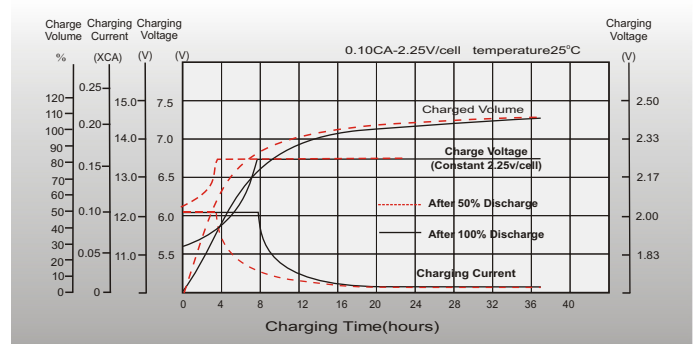
Unit: mm [inches]



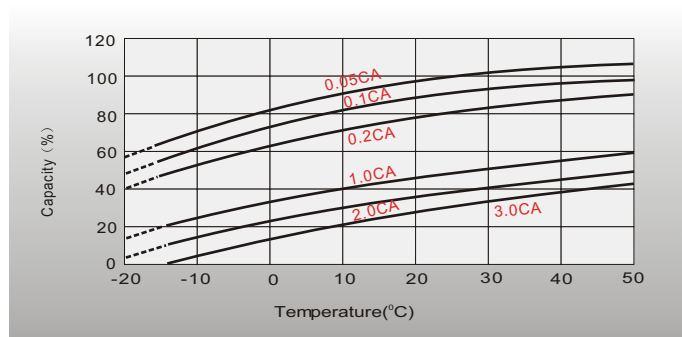
Discharge Characteristics



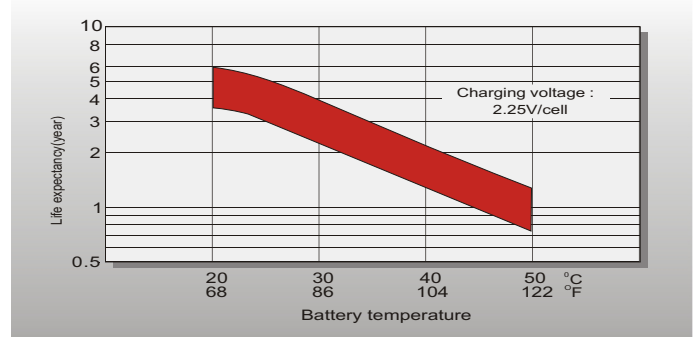
Float Charging Characteristics



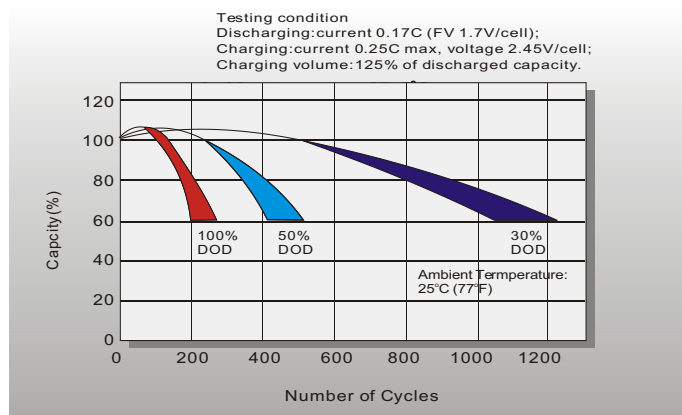
Temperature Effects in Relation to Batter Capacity



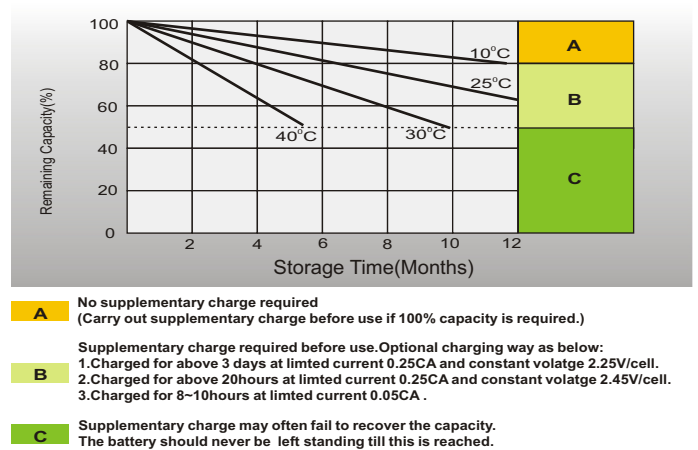
Effect of Temperature on Long Term Float Life



Cycle Life in Relation to Depth of Discharge



Self Discharge Characteristics



Sales Office

China sales office:

Address: 5th Floor, Xinbaohui Bldg., Nanhai Blvd.,
 Nanshan, Shenzhen, China. 518052
 Tel: +86-755-86036060 (100 lines)
 Fax: +86-755-26067269
 E-mail: battery@leoch.com

North America sales office:

Address: 19751 Descartes, Unit A,
 Foothill Ranch, CA 92610, USA
 Tel: 949-588-5853
 Fax: 949-588-5966
 E-mail: sales@leoch.us

Europe sales office:

Address: LaCampagna House. Main Road.
 Gloucester. GL2-8JH. United Kingdom
 Tel: +44(0) 1452 751016
 E-mail: malcolm@leoch.com